

Universal Tablet Holder



PARTS (NOT TO SCALE)

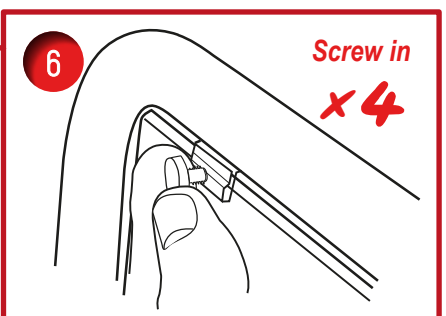
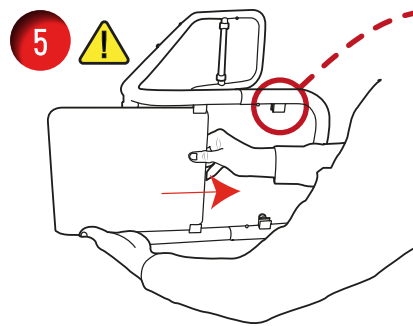
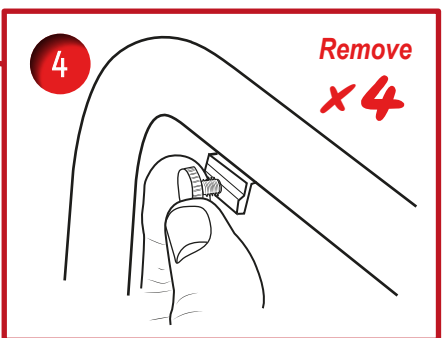
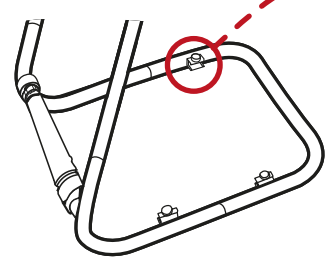
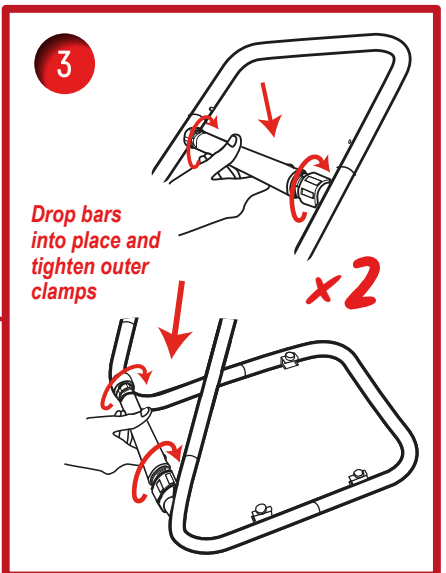
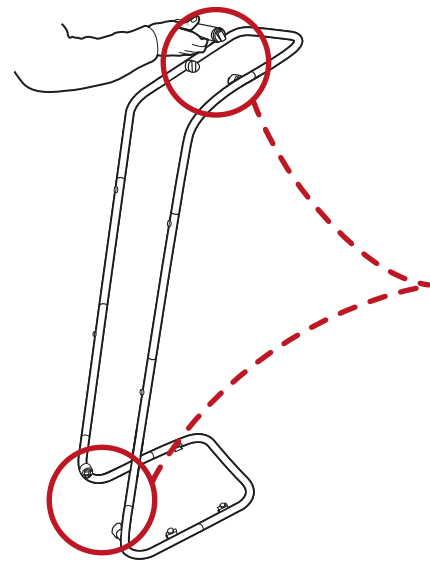
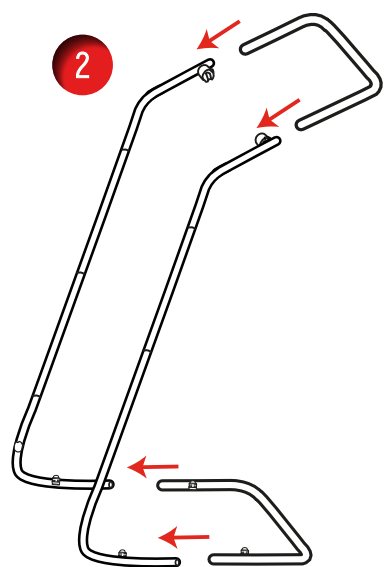
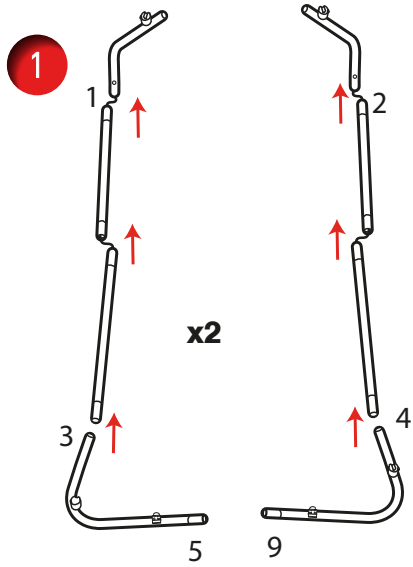
**tablet not included*

OPTIONAL (NOT TO SCALE)

TOOLS REQUIRED

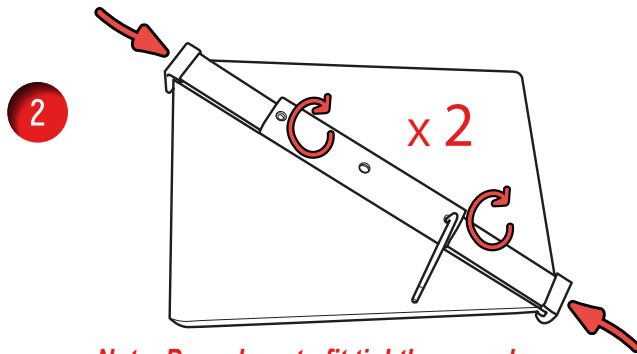
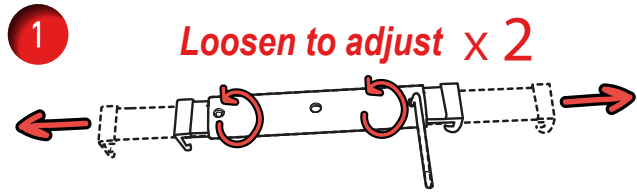
4mm
Provided in a box

FOR ATTENTION

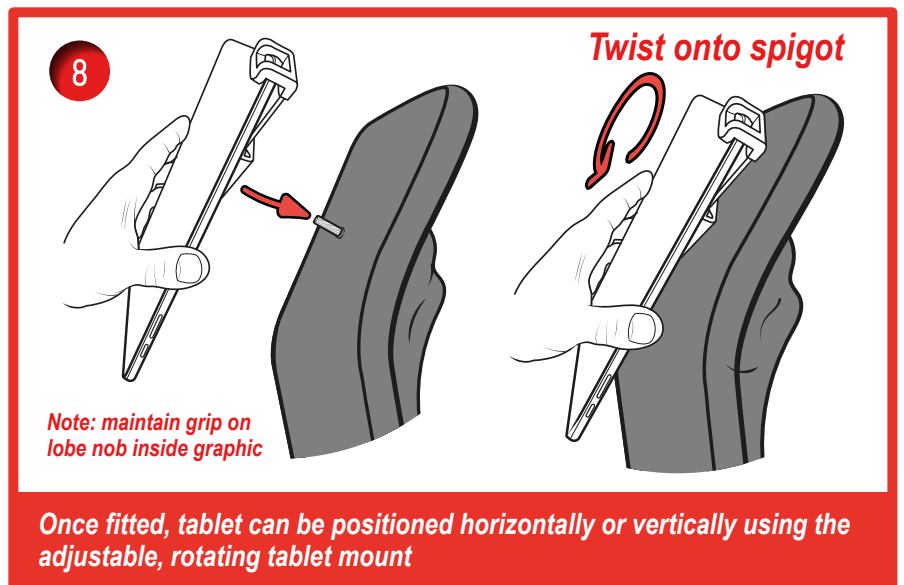
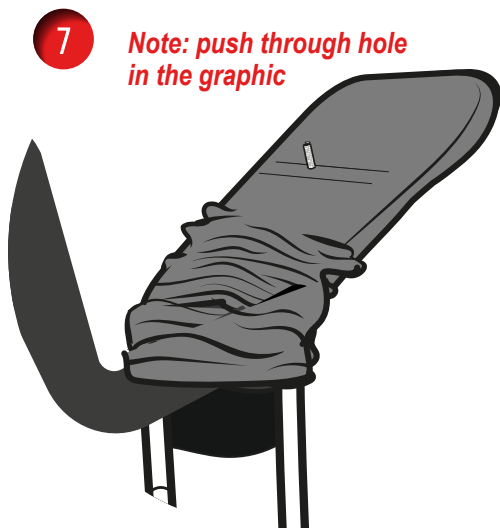
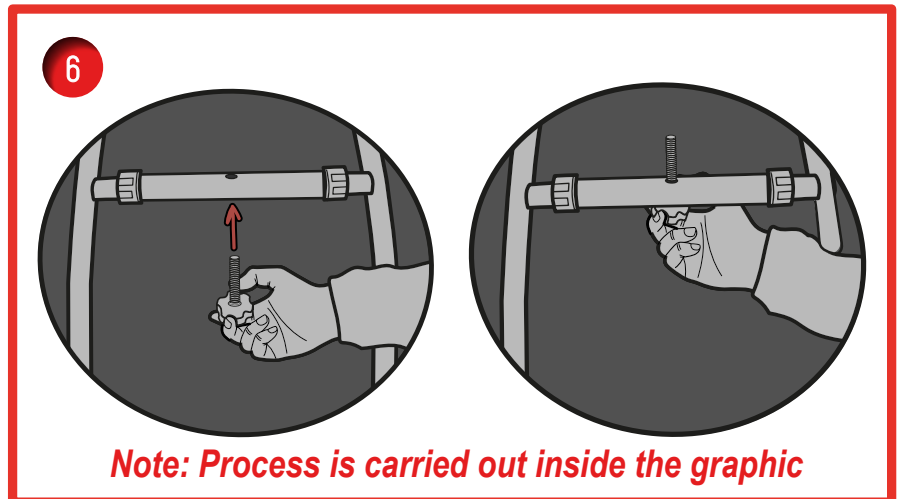
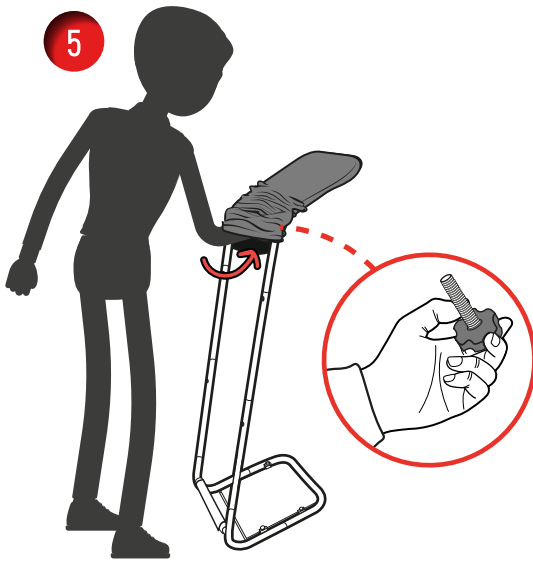
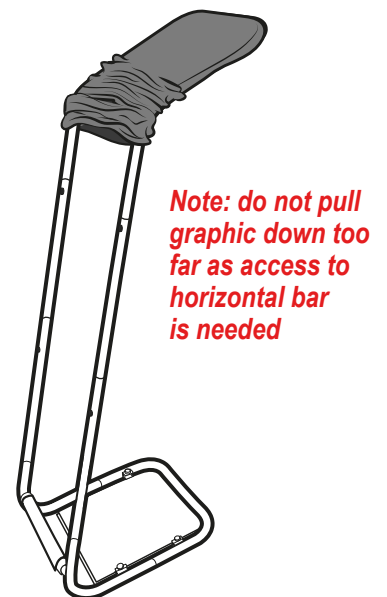
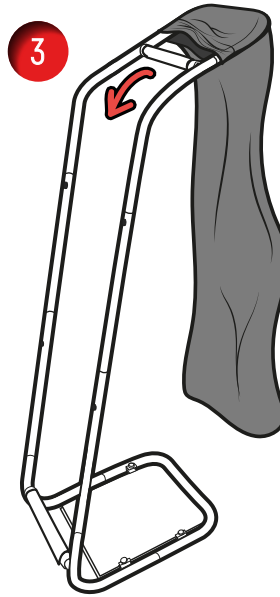


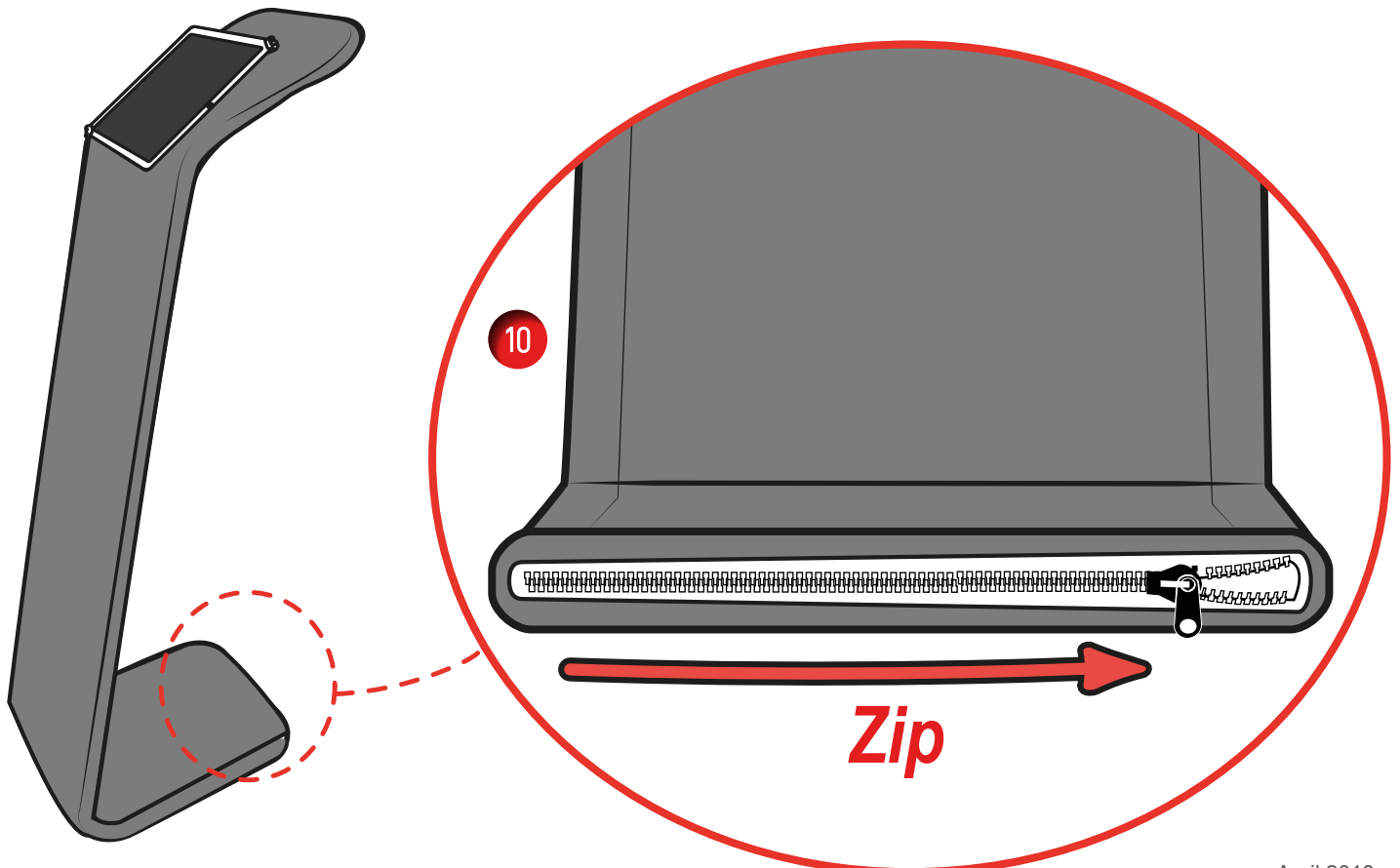
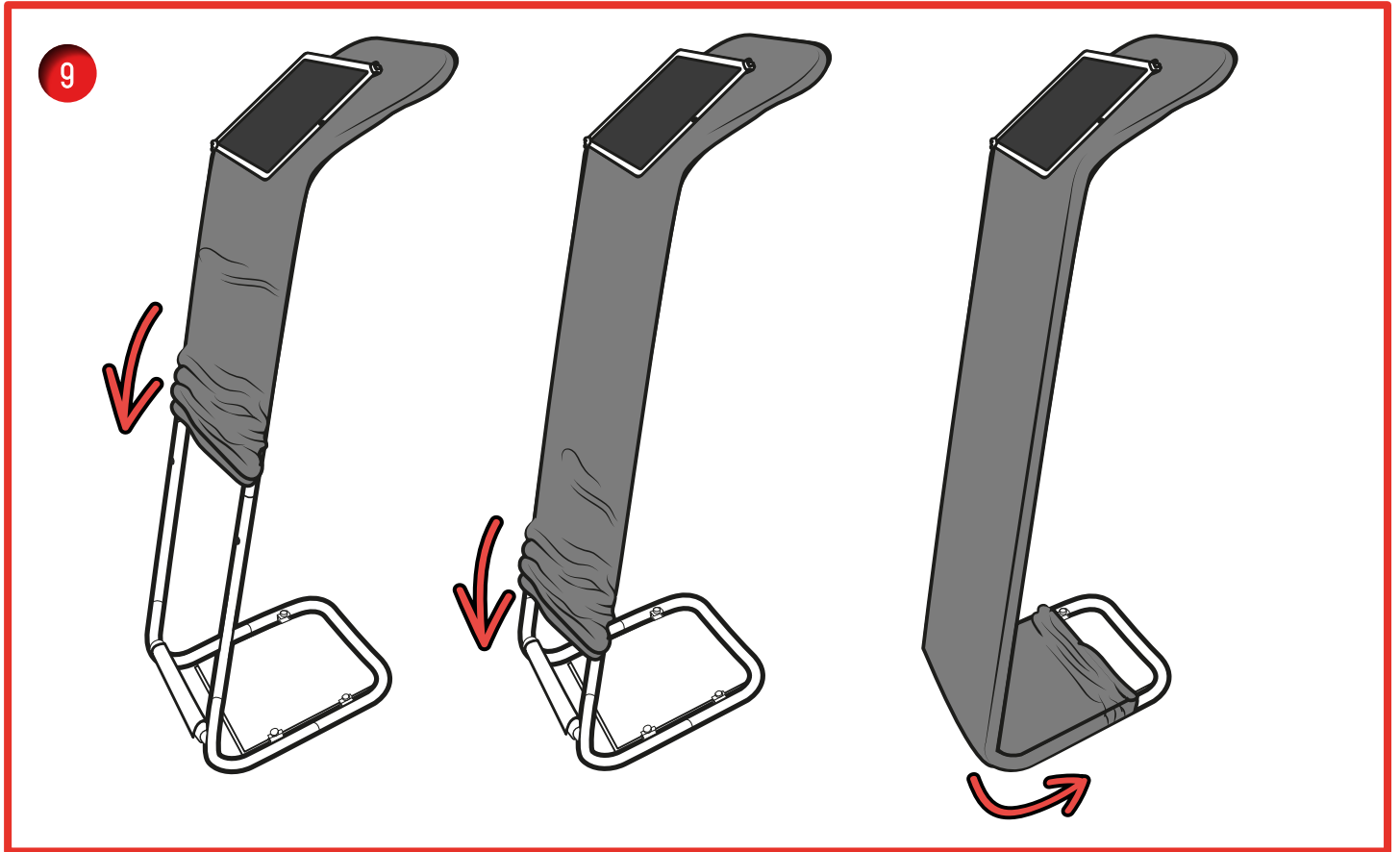


Installing Tablet Holder/Fitting Graphic

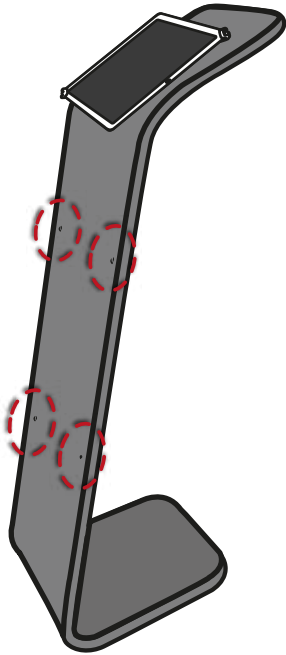


Note: Press bars to fit tightly around corner of tablet and tighten using Allen Key*

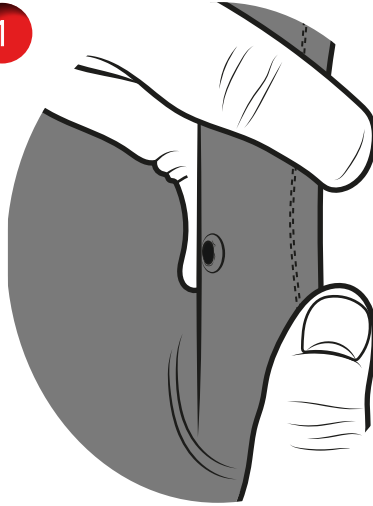




Installing Optional Literature Rack

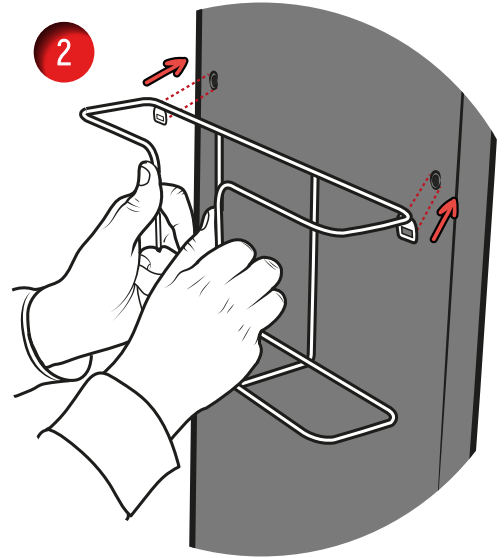


1

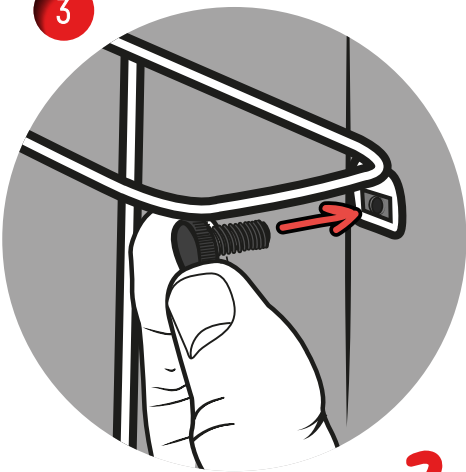


Find the holes in the graphic

2

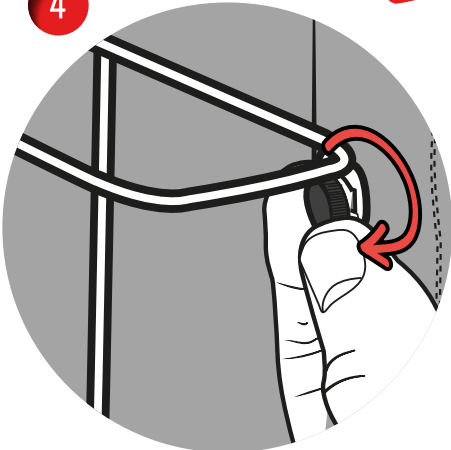


3



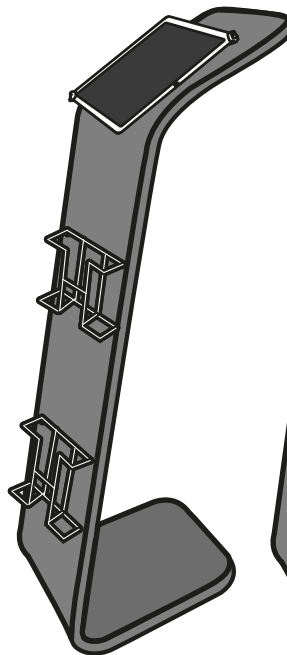
x2

4

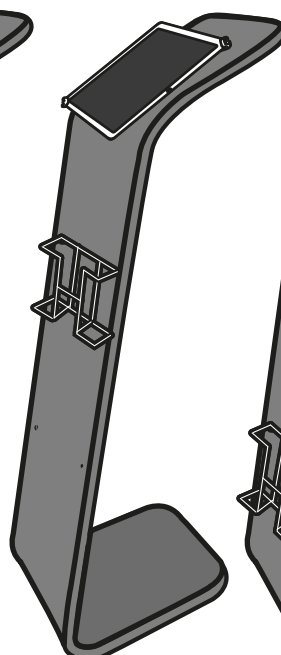


POSSIBLE ARRANGEMENTS

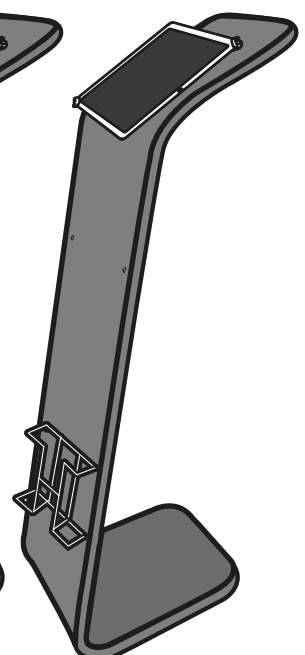
A



B



C



(Option A requires two rack kits)