

Modulate™ Straight 1820

MOD-S-1820



Modulate™ consists of a set of frames made from aluminium tubes (Ø30 mm) covered with a printed tension fabric graphic. These frames can be connected together using powerful magnets inside each frame. Modulate range is available in 11 different sized formats.

- Thanks to the exclusive **MagLink** magnetic system built into the structure, you can connect the frames by simply touching them together.
- With the **Twist & Lock** system, simply position the foot under the structure, turn it and it's locked!
- The graphics are very easy to maintain thanks to the crease-resistant and machine washable textile cover. Stretch fabric with zip system.



360° MagLink connector in each pole. 4 magnets per structure



Optional 400 mm extension to change the height of the structure



Self-locking system with bungee poles and push-buttons



Simple assembly with numbered frame parts



Central reinforcement tube (Ø 18 mm)



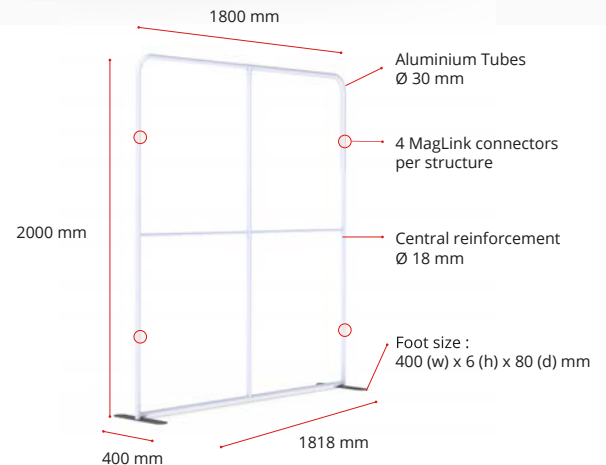
2 stabilising feet with Twist & Lock supplied with each frame



Double-sided tension fabric. Zip system



Modulate™ carry bag with dedicated compartments for the feet and graphics



Structure informations :

Item	Modulate Straight 1820
Code	MOD-S-1820
Structure dimensions	1818 (w) x 2000 (h) x 400 (d) mm
Graphic visual area	1800 (w) x 1982 (h) mm
Boxed dimensions	1000 (w) x 245 (h) x 125 (d) mm
Structure weight	7.80 kg
Boxed weight	8.18 kg

OPTIONAL ELEMENTS :



Modulate half feet (pair)
MOD-HALF-FOOT-P
218 (w) x 6 (h) x 80 (d) mm



Extension Kit
MOD-EXT400MM
3 tubes



Spot LED Flood
LED-FLOOD-ARM-BDLK



Spot LED Strip
LED-STRIP-ARM-BDLK



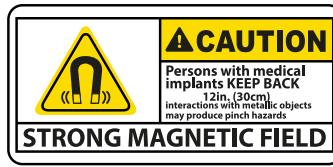
Fixing for 30mm Ø tubing
US903

MIX & MATCH THE 11 MODULATE FRAMES :

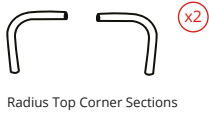


Modulate™ Straight 1820

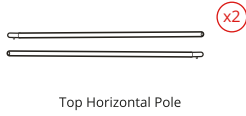
MOD-S-1820



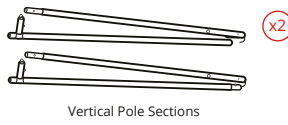
ELEMENTS



Radius Top Corner Sections



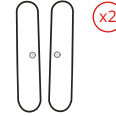
Top Horizontal Pole



Vertical Pole Sections



Vertical Centre Pole



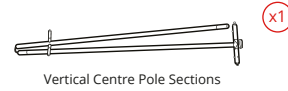
Feet



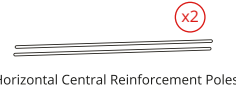
Gloves



Bottom Horizontal Pole

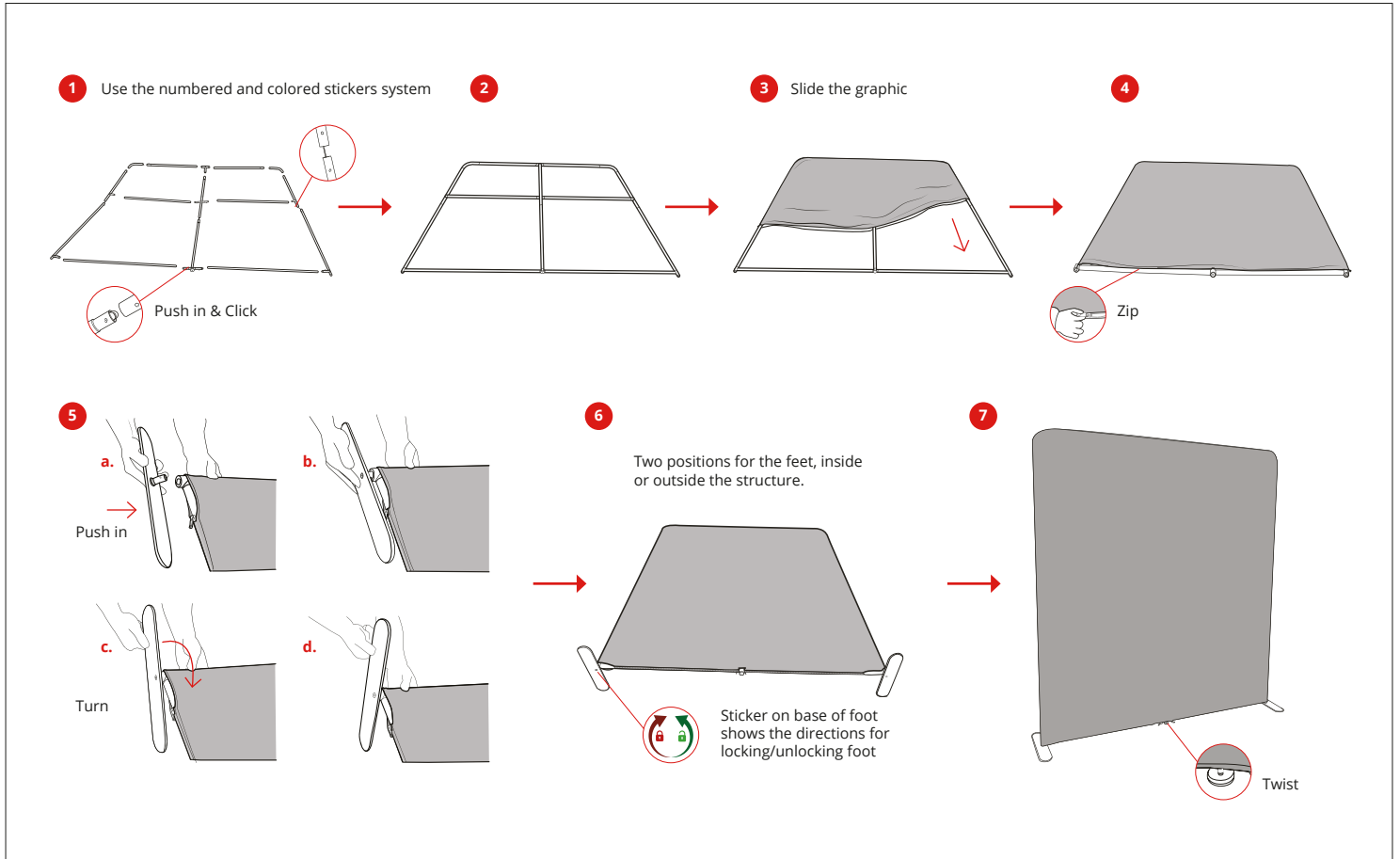


Vertical Centre Pole Sections

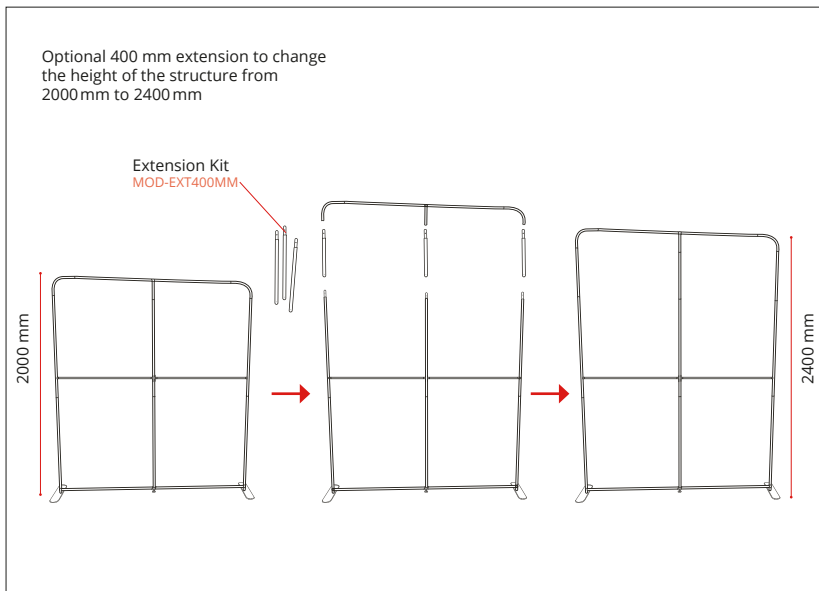


Horizontal Central Reinforcement Poles

ASSEMBLY



EXTENSION KIT (OPTIONAL) 2000 MM → 2400 MM



CONNECTING MULTIPLE FRAMES

Remove one foot from second frame and align both frames on one foot

