

SPECIFICATIONS

GRAPHIC PANEL SIZES

Finished graphic panel size

2300 x 1200 / 1000 / 800 / 600mm
[Includes 200mm bleed]

Visual graphic area

2100 x 1200 / 1000 / 800 / 600mm

SYSTEM SIZES

Boxed size

1200 = 1300 [l] x 215 [w] x 95 [d]mm
1000 = 1100 [l] x 215 [w] x 95 [d]mm
800 = 900 [l] x 215 [w] x 95 [d]mm
600 = 740 [l] x 215 [w] x 95 [d]mm

Assembled size

1200 = 1220 [w] x 165 [d] x 2120 [h]mm
1000 = 1020 [w] x 165 [d] x 2120 [h]mm
800 = 820 [w] x 165 [d] x 2120 [h]mm
600 = 620 [w] x 165 [d] x 2120 [h]mm

BOXED WEIGHTS

Single-sided

1200mm = 6.5kg 1000mm = 5.6kg
800mm = 4.3kg 600mm = 3.7kg

Double-sided

1200mm = 7.7kg 1000mm = 6.6kg
800mm = 5.5kg 600mm = 4.5kg

NOTE: Please test your substrate suitability before use.

COMPONENT LIST

1x Sidewinder unit complete with poles [except 600mm wide, where poles are separate]

Graphic hanger

- 1x hanger [single-sided unit]
- 2x hangers [double-sided unit]

Hook fastener

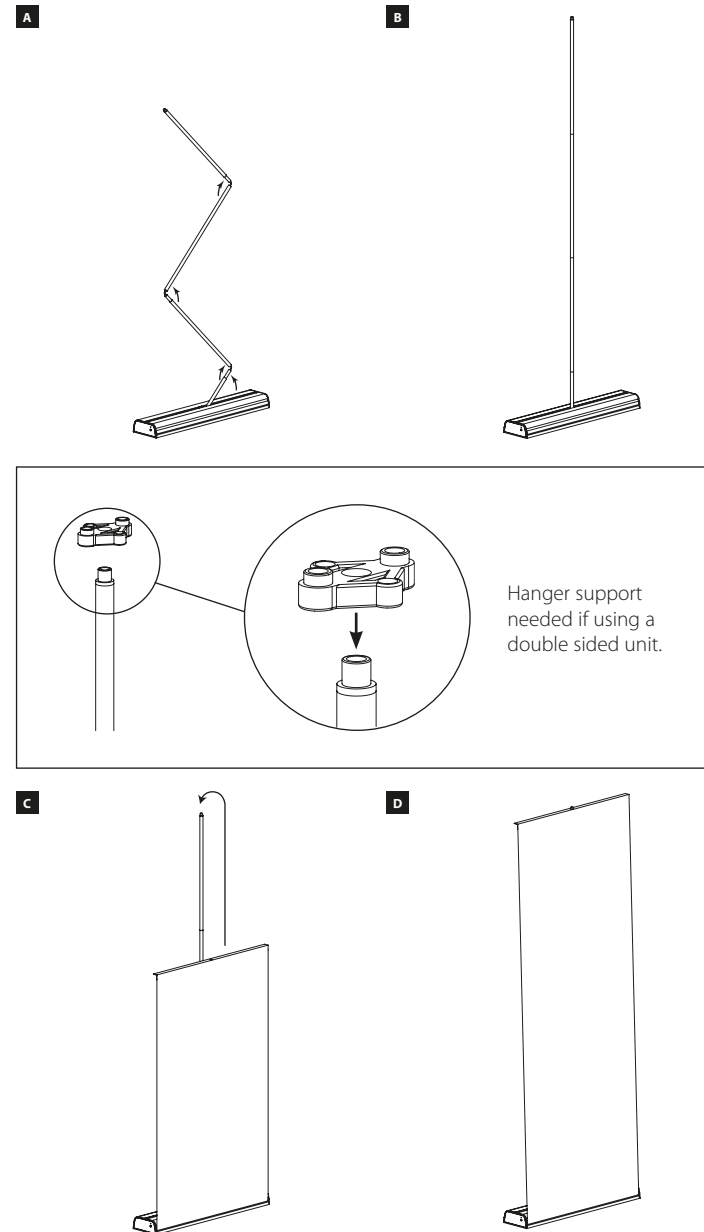
- 1x strip [single-sided unit]
- 2x strips [double-sided unit]

1x Hanger support [double-sided unit]

1x Padded carry bag

FRESCO
graphic displays

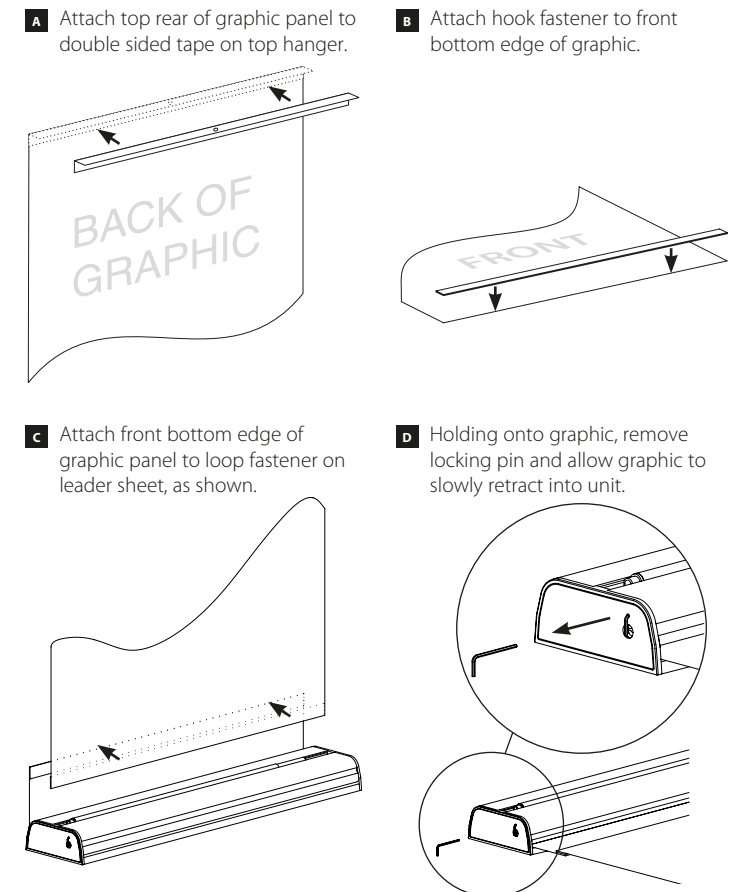
SIDEWINDER BANNERSTAND ASSEMBLY INSTRUCTIONS



IMPORTANT NOTICE:

When retracting a graphic always slowly guide it into base housing, otherwise graphic damage may occur.

GRAPHIC ATTACHMENT



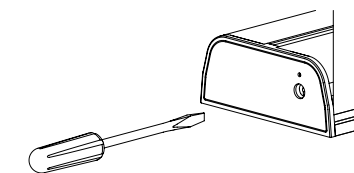
ADDING OR REMOVING GRAPHIC TENSION

ADDING TENSION

Insert a standard flat headed screwdriver into slot located in the end of unit and turn clockwise to add extra graphic tension.

REMOVING TENSION

To un-tension graphic panel place a flat headed screwdriver into the slot and push to disengage ratchet. Hold in and turn anti-clockwise until tension in spring is released. To remove graphic panel carefully peel it off leader sheet. The graphic hanger can also be removed or a new hanger can be purchased.



IMPORTANT NOTICE:

To ensure a proper bond between graphic and double sided tape pressure must be applied. The adhesive should be allowed to cure for 24 hours before tension is applied.