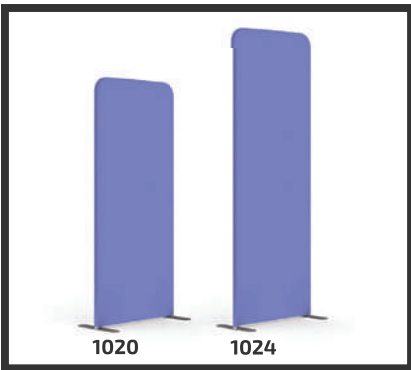


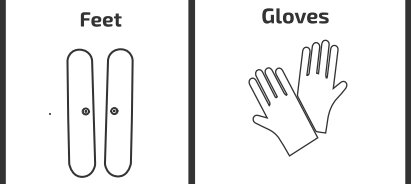
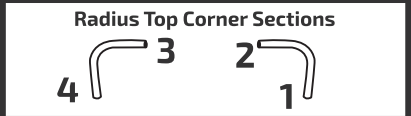
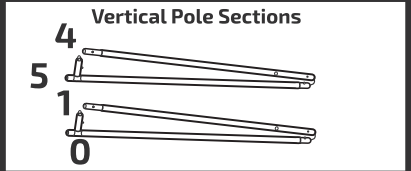
Modulate 1020 and 1024 (Straight)

August 2019

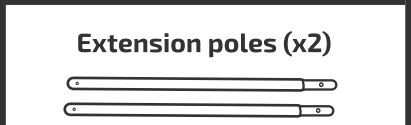


PARTS (NOT TO SCALE)

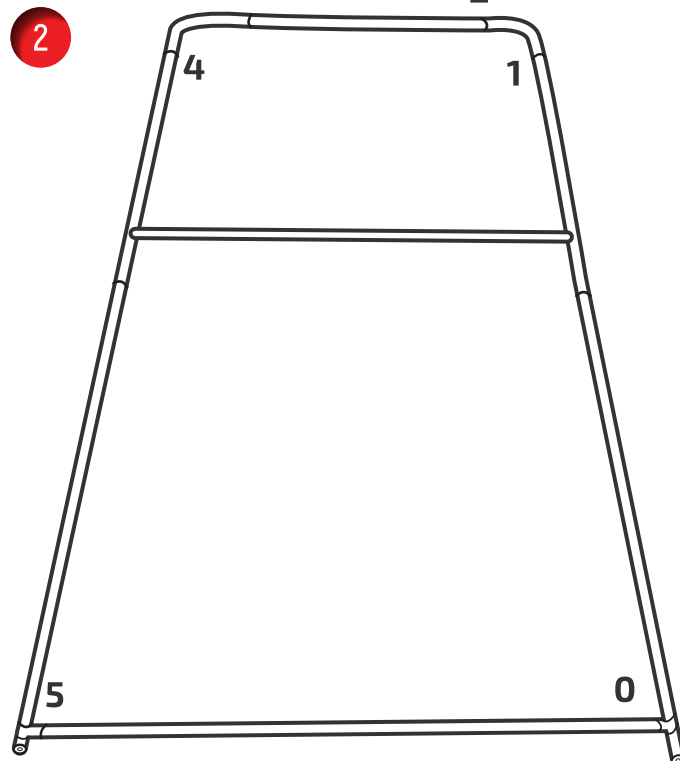
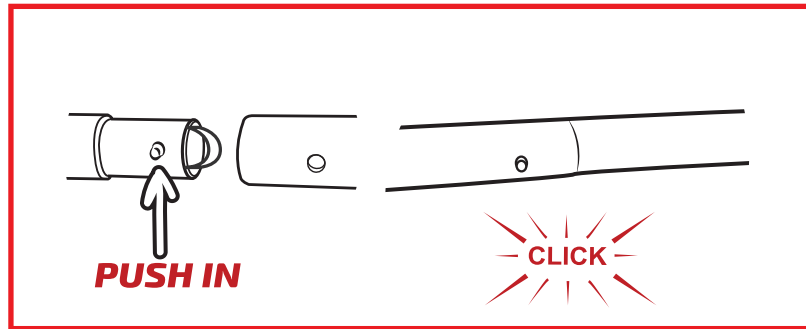
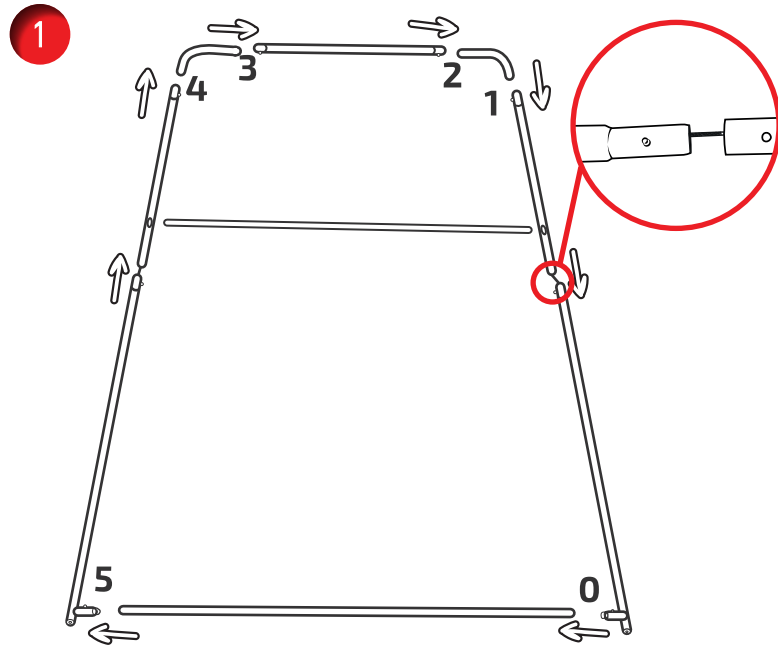
1020 Straight



1024 Straight

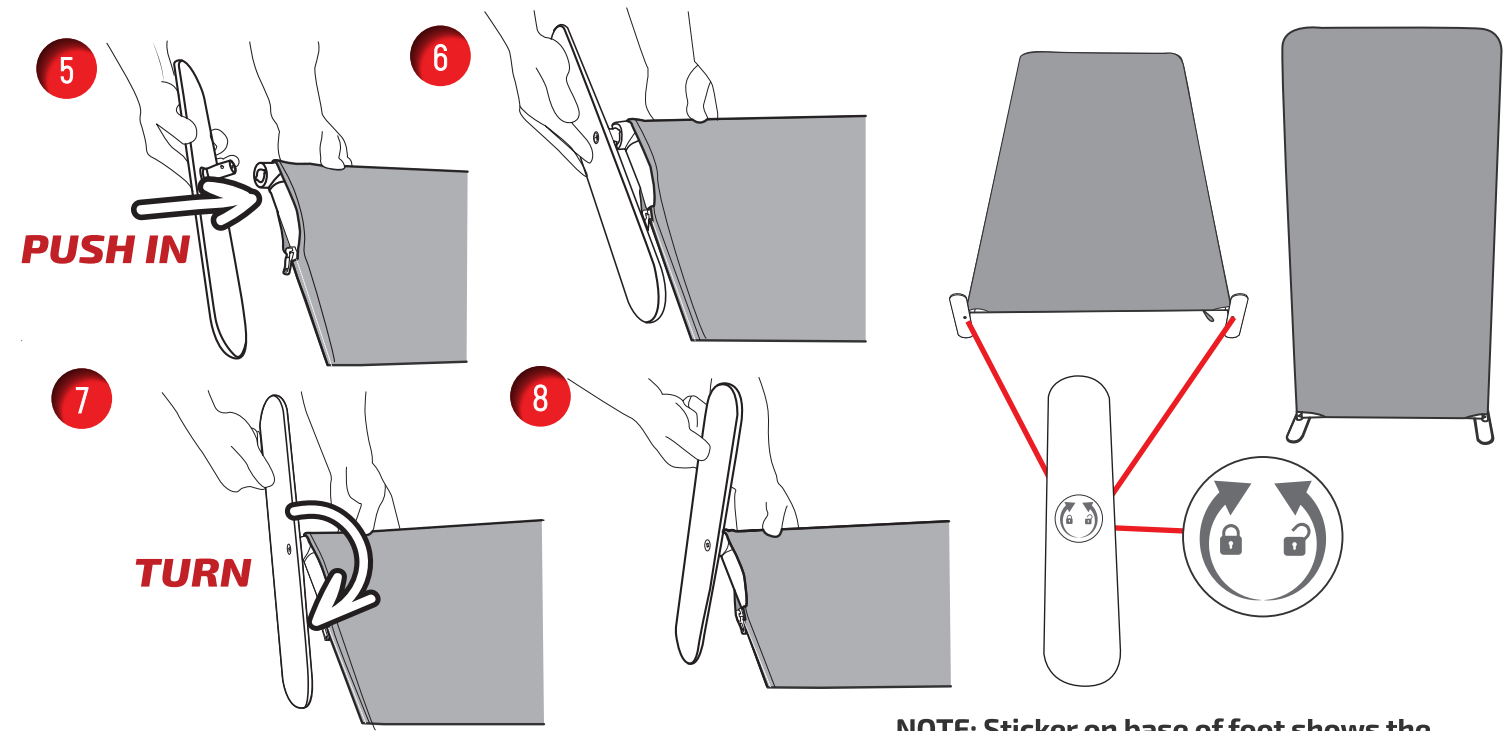
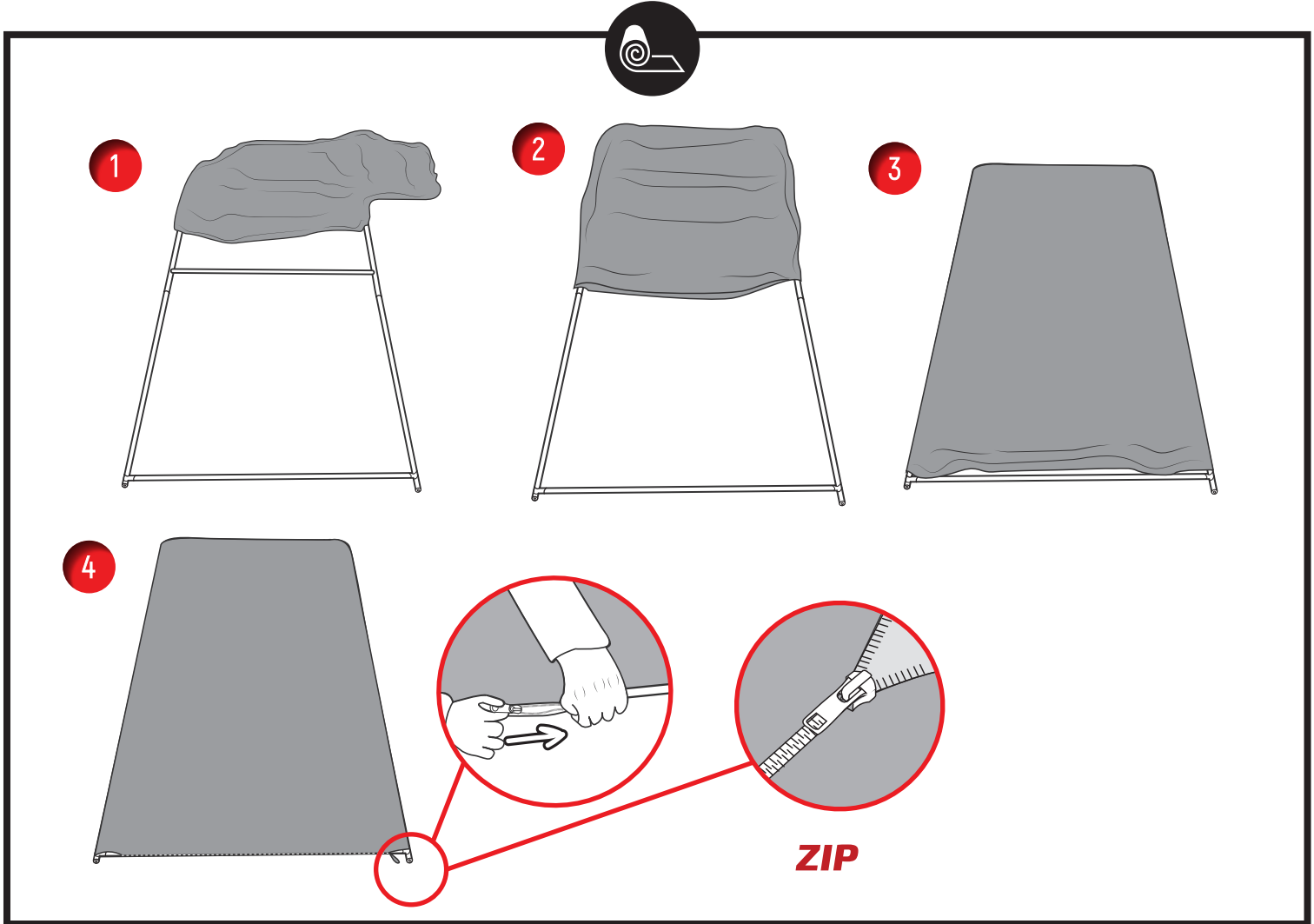


NOTE: The extension poles are used for 1024 Straight frames



Modulate 1020 and 1024 (Straight)

August 2019



Turn clockwise to lock foot in position
Turn anti-clockwise to unlock foot

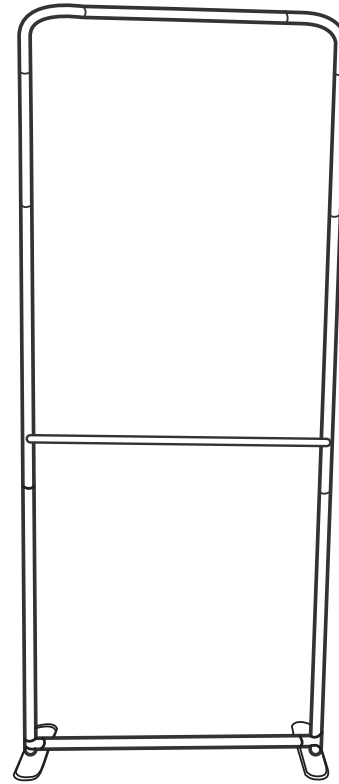
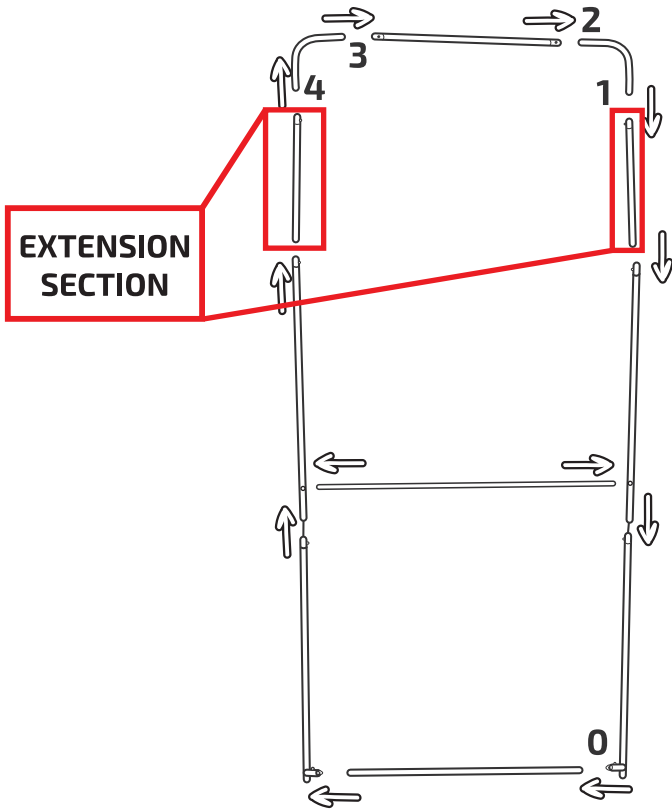
NOTE: Sticker on base of foot shows the directions for locking/unlocking foot

NOTE: TWO POSITIONS FOR THE FEET (SEE OPTION 1 FOR SECOND POSITION)



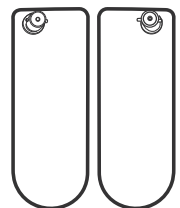
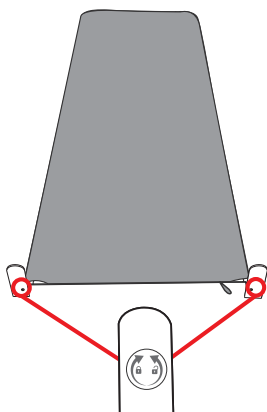
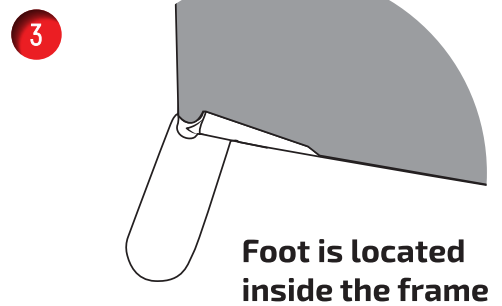
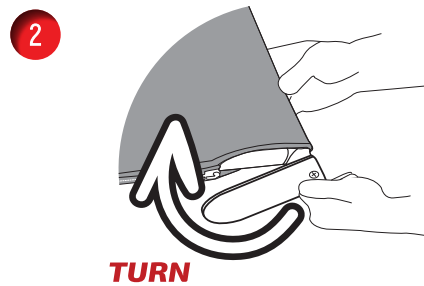
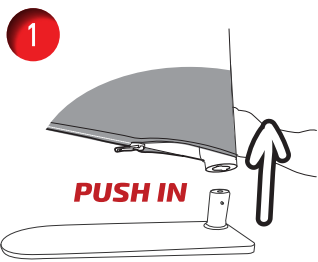
OPTIONAL (EXTENSION KIT)

NOTE: EXTENSION SECTION SUPPLIED WITH 1024 STRAIGHT FRAME



OPTIONAL (HALF FEET)

OPTION 1 NOTE: HALF FEET CAN BE POSITIONED ONTO THE FRAME TWO DIFFERENT WAYS

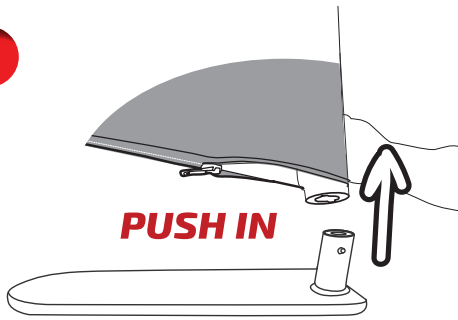


Turn clockwise to lock foot in position
Turn anti-clockwise to unlock foot

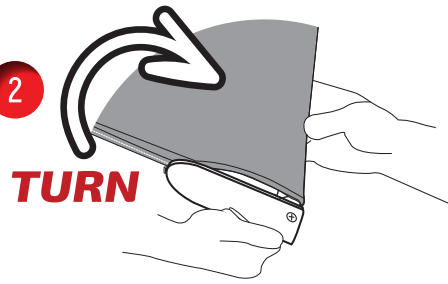


OPTION 2

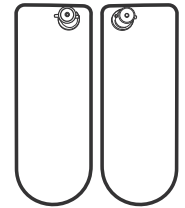
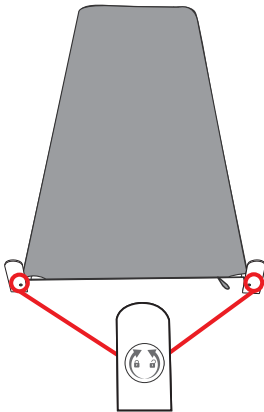
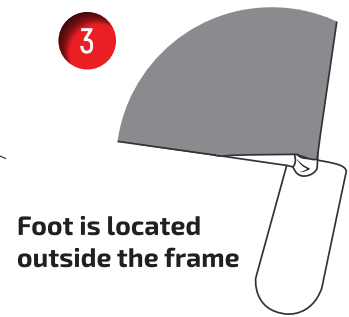
1



2



3



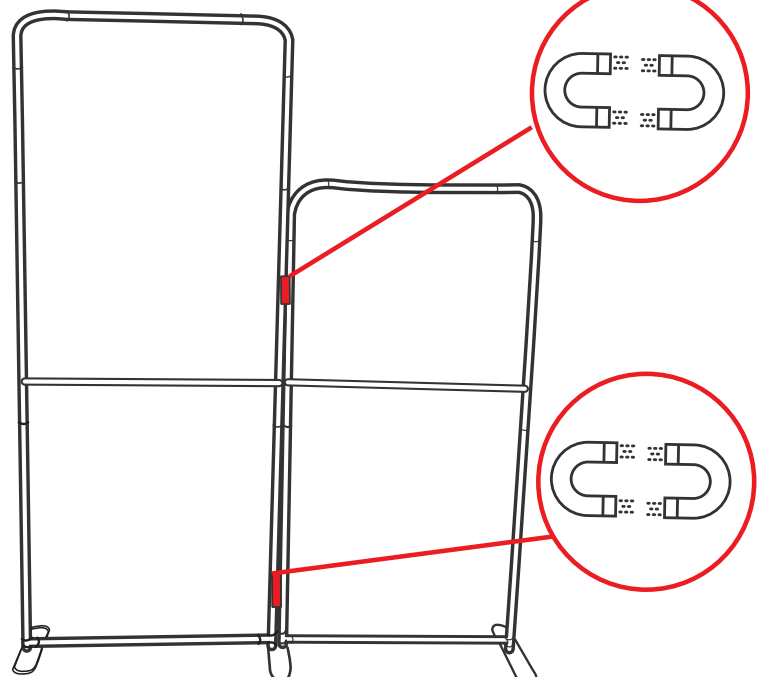
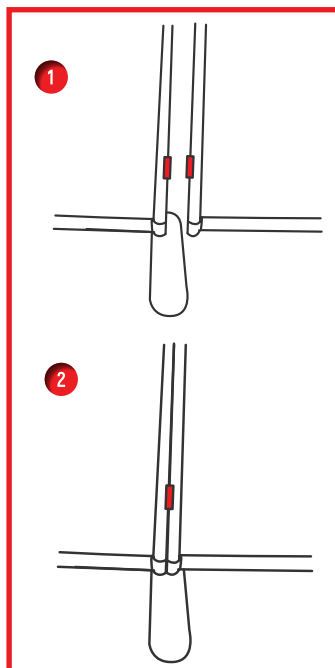
Turn clockwise to lock foot in position
Turn anti-clockwise to unlock foot



CONNECTING MULTIPLE FRAMES NOTE: 1024 STRAIGHT NOT INCLUDED

Remove one foot from second frame and align both frames on one foot

NOTE: FOLLOW OPTION 2 FOR HALF FEET TO CONNECT TWO FRAMES ON ONE FOOT



1024 Straight Frame and 1020 Straight Frame